

# Absolute Security



**19. September 2024**

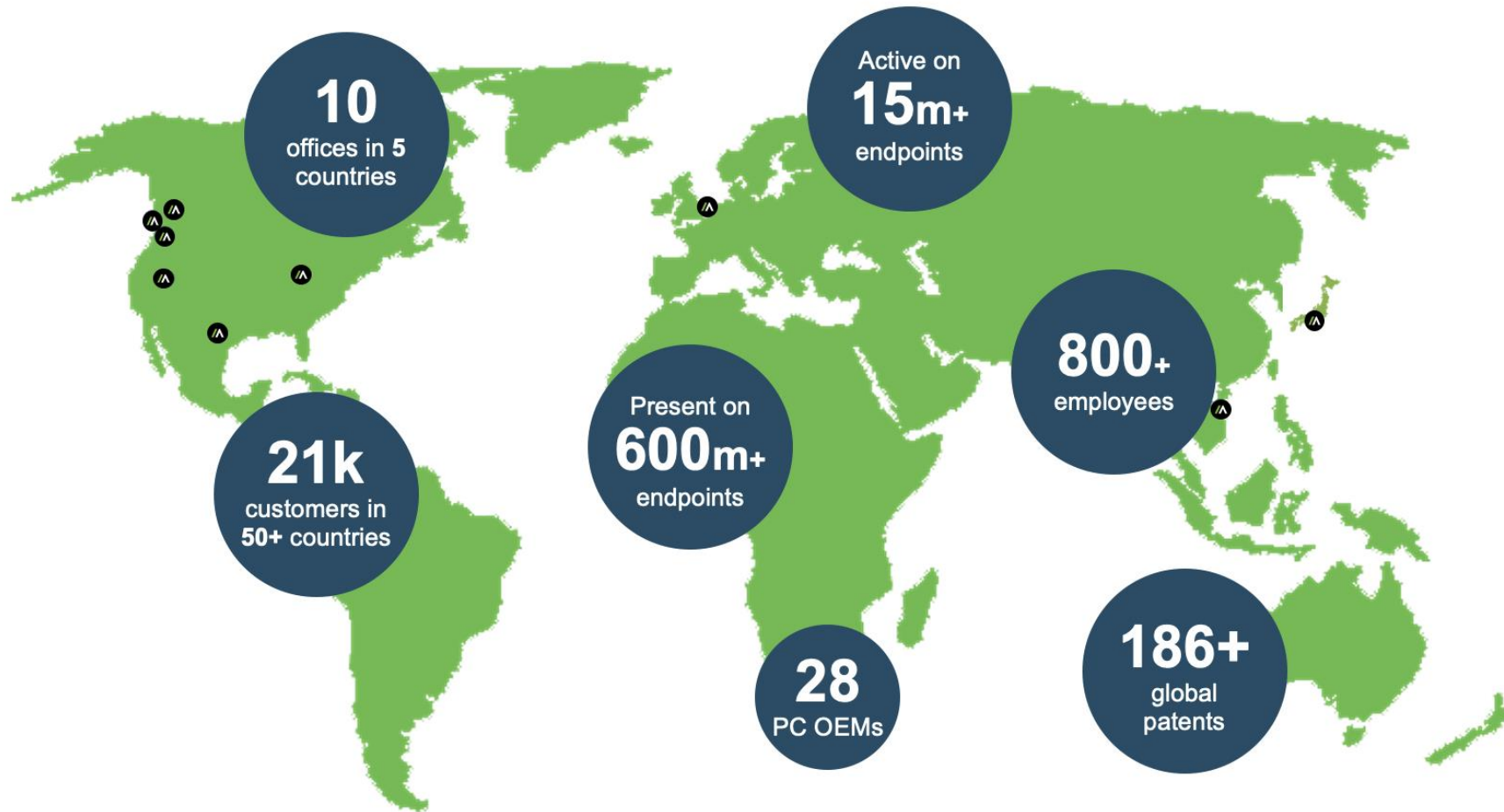


**Klaus Russnak**  
Dip.-Ing. (FH)  
Nachrichtentechnik  
EMEA Systems Engineer  
Secure Access  
Secure Endpoint  
[krussnak@absolute.com](mailto:krussnak@absolute.com)



**Sen Kumar**  
DACH Partner Manager  
Secure Access  
Secure Endpoint  
[skumar@absolute.com](mailto:skumar@absolute.com)

# This is **ABSOLUTE** Security



## When Insights Matters

240 unique  
endpoint data points

174 unique  
network data points

300M monthly  
application health  
scans



# We Make Security Work

From firmware boot through network access.



**ABSOLUTE<sup>®</sup>**  
SECURE  
ENDPOINT

Unique security  
assessments  
that start at the  
firmware

A resilient presence on  
the device that allows for  
automated self-healing of  
critical applications and  
network access

Deep visibility into  
applications and  
configurations of  
every user

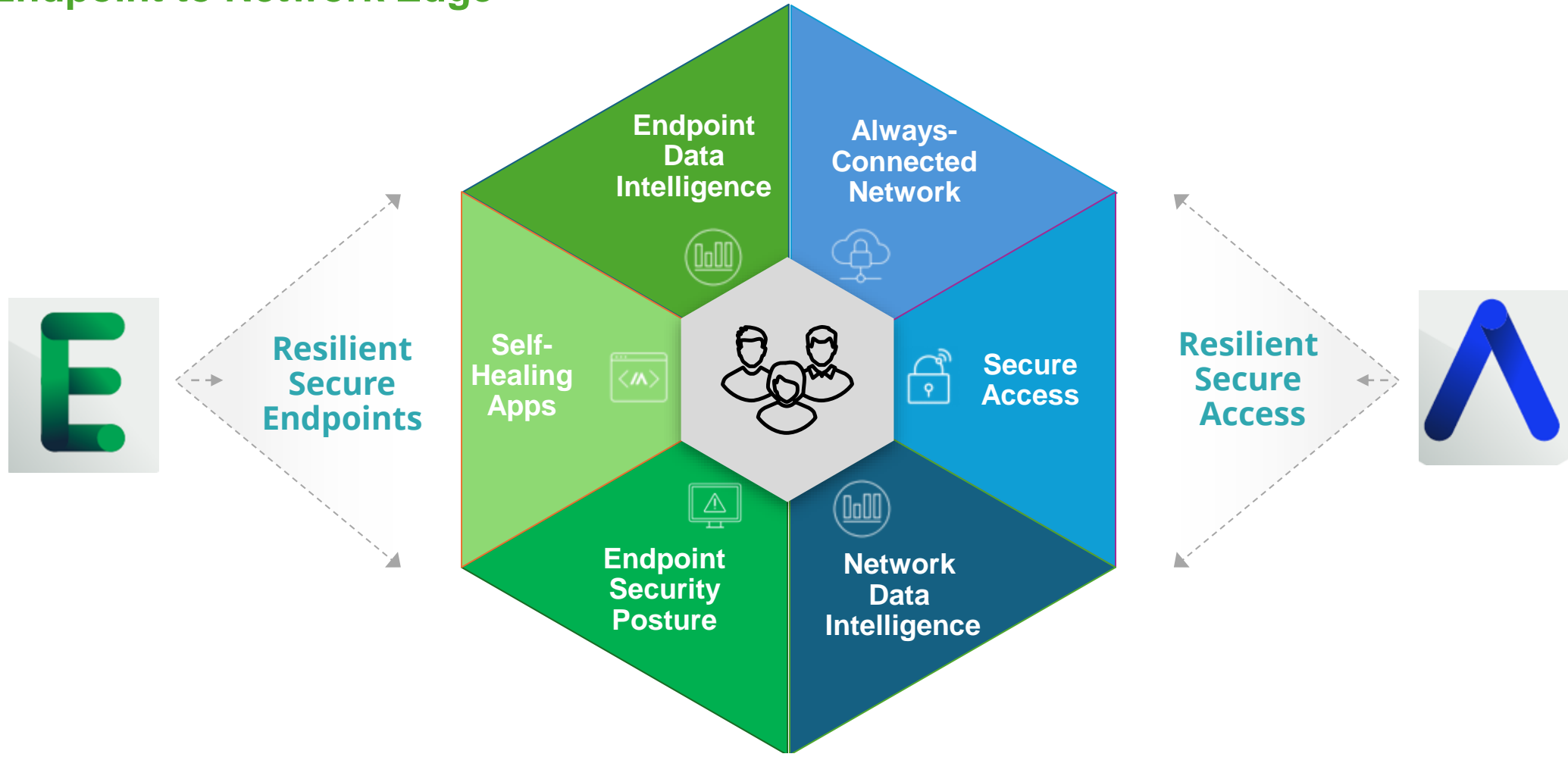
Robust insights  
and controls for  
any device on  
any network



**ABSOLUTE<sup>®</sup>**  
SECURE  
ACCESS

# Enabling the Anywhere Workforce End-to-End

From Endpoint to Network Edge





# Secure Access



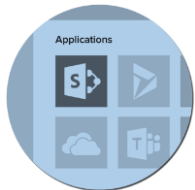
# Absolute Secure Access



**Mobile SSE | Security Service Edge**  
Intelligent security and access



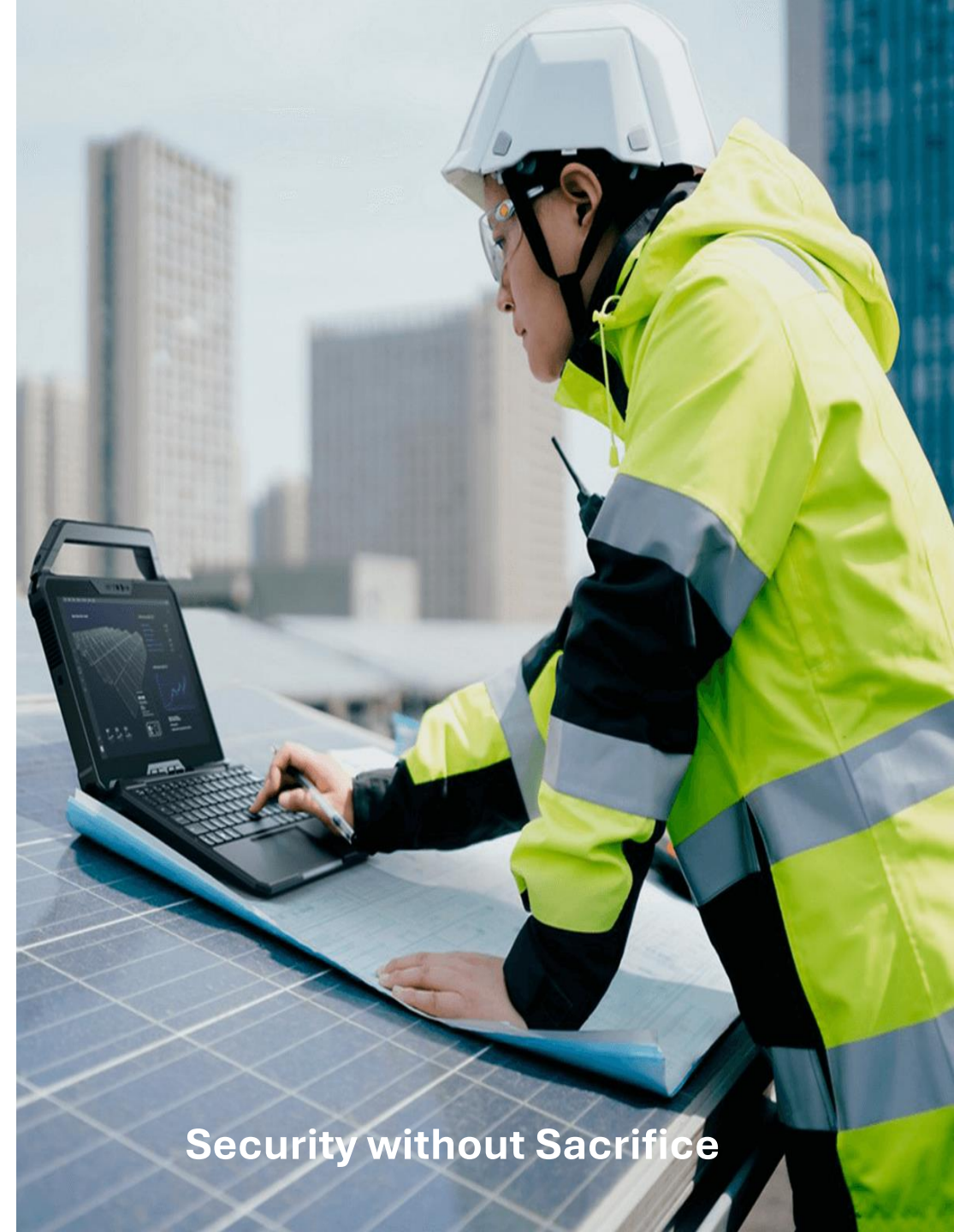
**Optimized Tunnel | Remote Access**  
Improved connectivity and experience



**Browser Isolation | Secure Web Gateway**  
Protected access to online destinations



**DEM | Digital Experience Monitoring**  
Enhanced visibility and diagnostics  
AI & ML Threat detection capabilities



Security without Sacrifice

# Markets We Serve



Legal



Finance & Insurance



Public Safety



Government



Healthcare



Transportation



Utilities & Energy



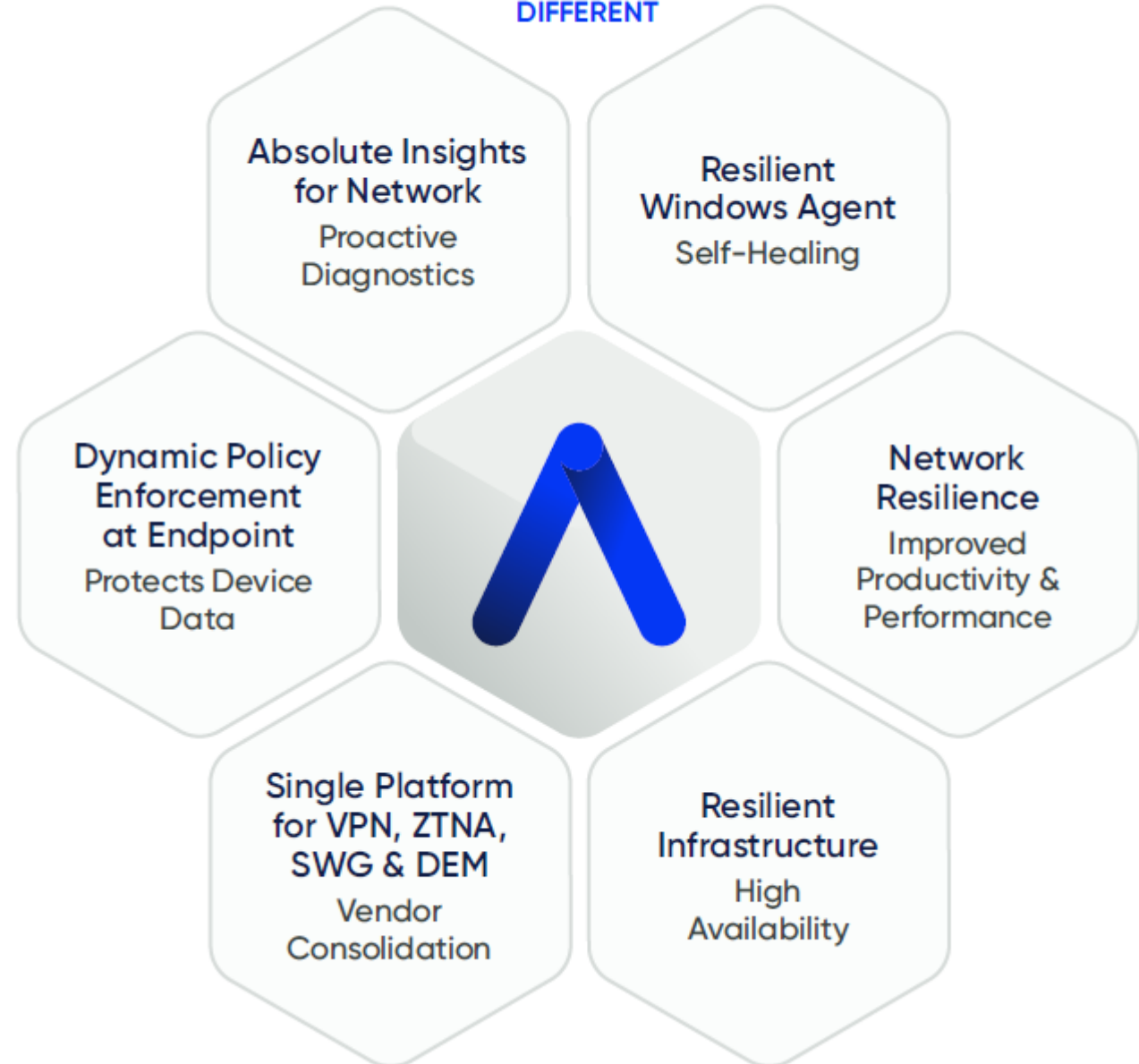
# Why Absolute Secure Access?

- Significantly improves the experience for mobile workers
- Increases productivity for highly mobile workers
- Deep visibility and diagnostics into user experience and third-party networks reducing helpdesk tickets and MTTR by 30%+
- The only flexible secure tunnel solutions providing enterprise VPN with Zero Trust Network Access principles on same platform
- Up and running in less than a day, works with existing systems and integrates with common security and IT tools
- SaaS or On-Premises





WHAT MAKES  
**Absolute**  
**Secure Access**  
DIFFERENT



What makes

**/ABSOLUTE®**

Secure Access  
Different

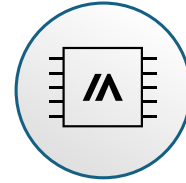




# Secure Endpoint



There has never been  
a more critical need  
**for an undeletable  
endpoint defense  
platform.**



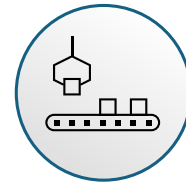
Firmware-  
embedded in  
**600M+** PCs



**21K+**  
customers  
worldwide



**180+**  
patents



**28** PC  
OEMs



**21M+**  
active  
endpoints



**Investor**  
**CROSSPOINT**  
CAPITAL

FUJITSU

Panasonic



Microsoft



Lenovo

TOSHIBA

ASUS

XPLORE



verizon

acer

DATEN

pinnacle

VAIO

LG

POSITIVO

BLU  
BOLD LIKE US

Getac



# Unbreakable Digital Tether to Every Endpoint



Factory-embedded  
**600M+ PCs**



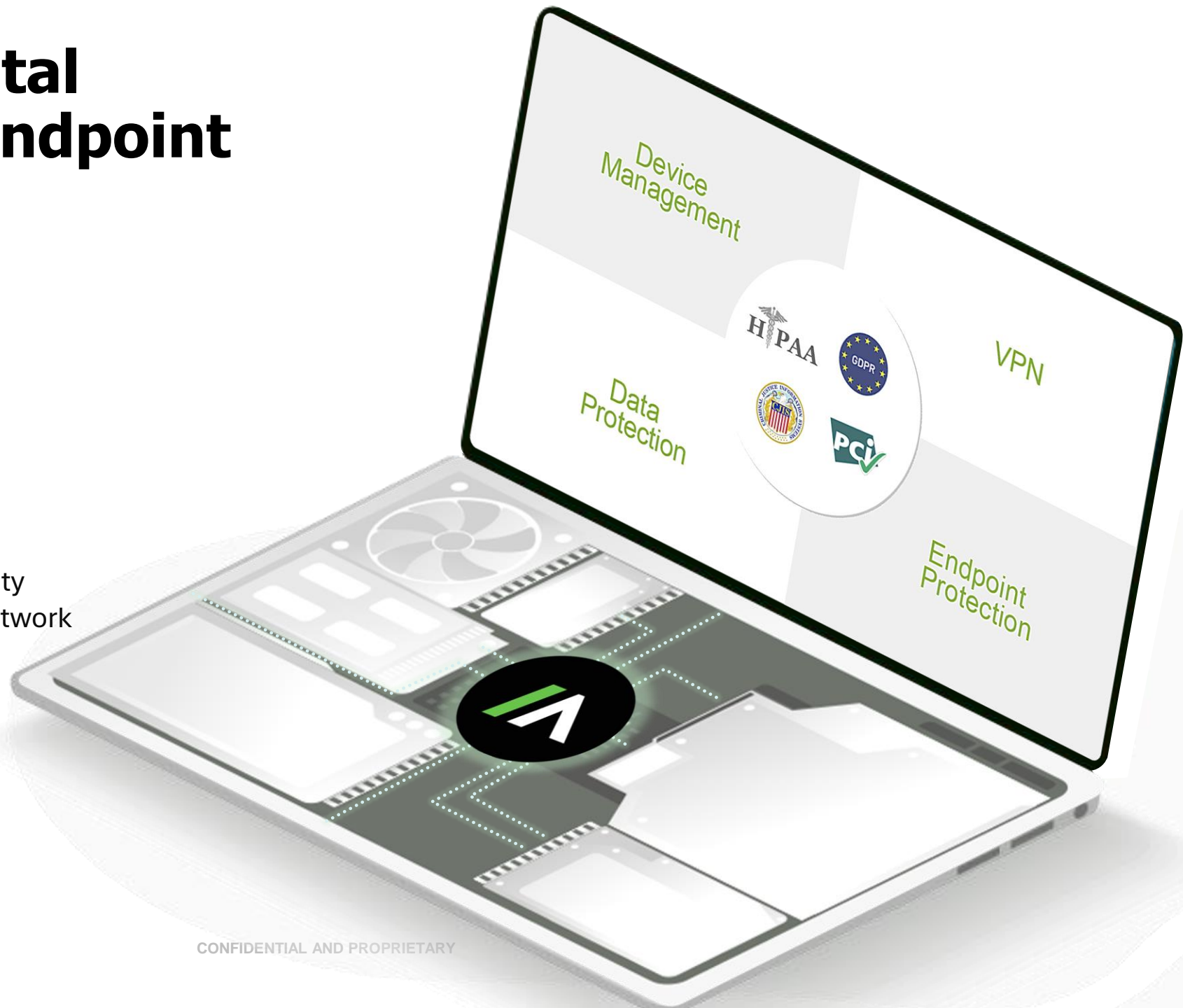
**Easily activated**  
desktops and laptops



**Unbreakable** endpoint visibility  
and resilience — on/off the network



**Cloud-based**  
no infrastructure required



## 1. Endpoint Protection

- Next-Gen Endpoint Security (AV/AM)
- Endpoint Detection and Response (EDR)



## 2. Endpoint Management

- Unified Endpoint Management (UEM)
- Vulnerability and Patch Management
- Remote Desktop Management



## 3. Network Security

- Virtual Private Network (VPN)
- Cloud Access Security Broker (CASB)
- Zero Trust Network Access (ZTNA)



## 4. Data Protection

- Full Disk and File Encryption
- Data Loss Prevention (DLP)



## 5. Others



# Use Cases – Enhancing **Asset Management**

- **Remove Dark Endpoint Issue**
  - Offline Freeze (Custom Period)
  - Enforce Returning of Replacements
- **Unbreakable visibility - unparallel and under the OS**
  - Rich Hardware Data Collection & Software Inventory Collection
  - Automated Customizable Reports
- **Tracking**
  - Geofencing
  - Enter and Exit
- **Integration**
  - Service Now Integration (Reporting and Actions)
  - SIEM Integration through open API (e.g. Vendor, Device Management)
- **Migration and HW-Refresh**
  - Enable project
  - Migrate and Refresh more productive and successful
- **Enhanced Device Management**
  - PS - & Bash Scripting
  - Config-Changes to Assets



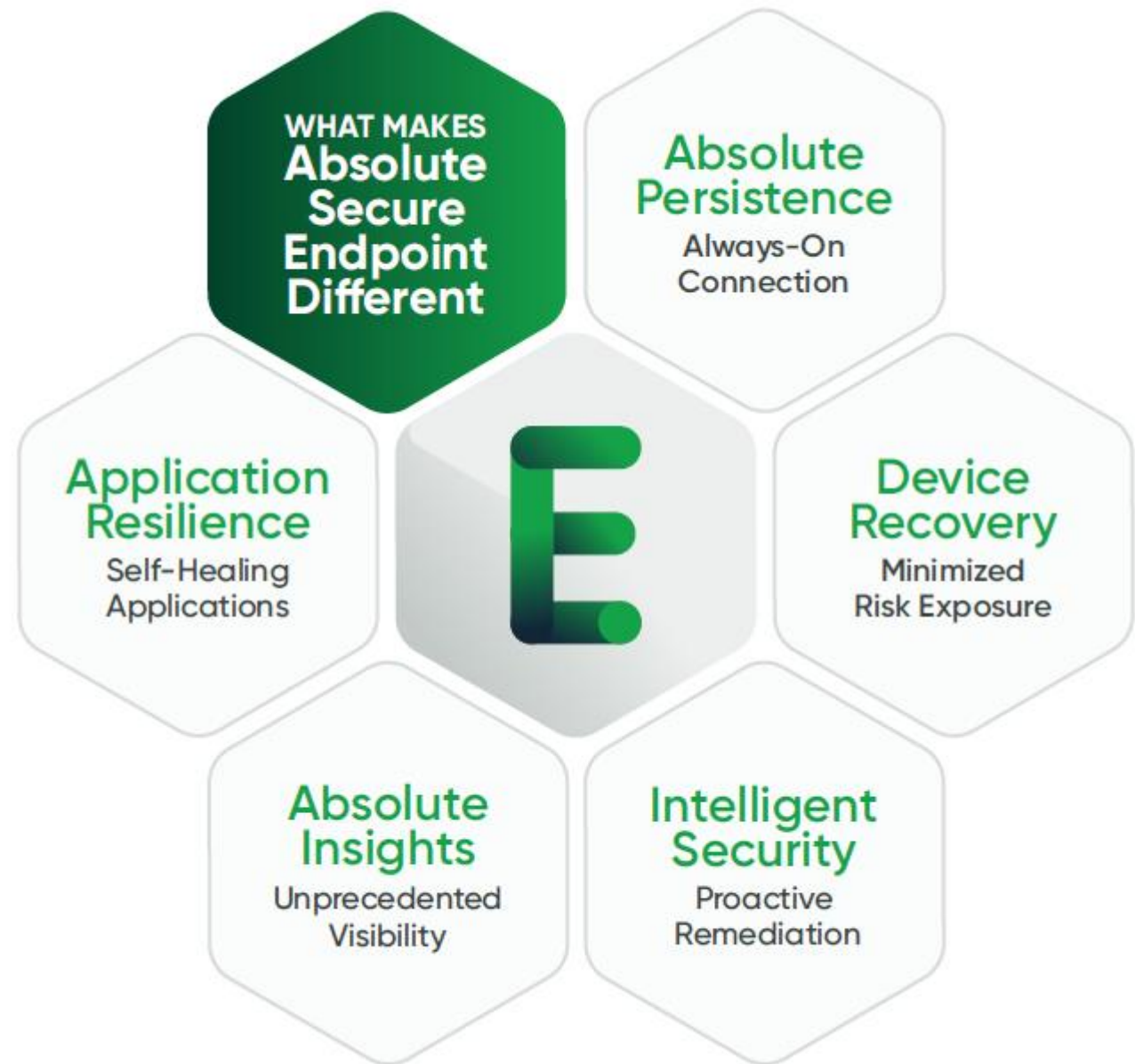
# Use Cases – Makes **Security** more Resilient

- **Unbreakable Asset Management**
  - 0-Touch Device decommission
  - Device Protection (Remote Supervised Password)
  - Remote Process in place (Wipe, Freeze, Message)
  - Remove Users from device
- **Location of devices**
  - Last Known User
  - Last Known Location
- **Security Posture**
  - Status of Encryption, AV, Device Management (SCCM, Intune)
  - Application Self Healing of critical Security Apps (UEM, EDR, AV, ...)
- **Scripting – Endless Possibilities**
  - Performance, Privileges & Data Collection
  - Vulnerability Detection, Ransomware Recovery & Remediation
- **Zero-Day Threats**
  - Not relying on the user and security in place that are blind to devices off network
  - Second Line of Defense

# Value – Problems we solve

- **Remote Wipe Devices with NIST certification**
  - De-Commissioning (leasing-returns, 2<sup>nd</sup> Life, ...)
- **Freeze (OS and Firmware)**
  - Secure Device Transport
- **Manage BIOS Security**
  - (esp. Lenovo RSVP or PS Scripting)
- **Remote (code signed) Scripting Capabilities**
- **Self Healing Applications (App Persistence) & Device Recovery**
- **Locate Device / Geofencing**
- **Improve and secure HR-Processes & Transport Logistics**
- **Compliance- & Governance Requirements**
- **Single Source of Truth & Data Exchange via API's**
- **+++ more to come .....**

What makes  
**/ABSOLUTE®**  
Secure Endpoint  
Different





Questions?

Or Want See A Brief  
Platform Demo?